

# GEOTOP

THE PROGRAM PACKAGE IS DESIGNED FOR PROCESSING AND INTERPRETATION OF GEOLOGICAL GEOPHYSICAL STUDIES IN A BOREHOLE

## MAIN PURPOSE:

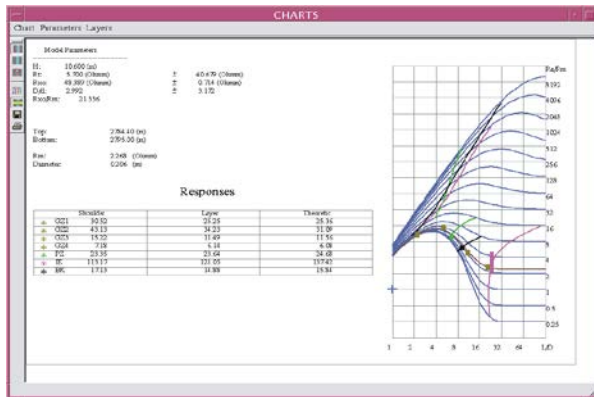
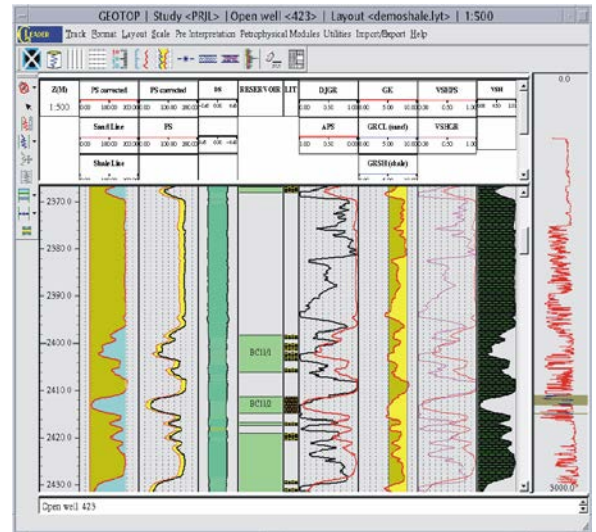
- LITHOLOGICAL DISJUNCTION OF A WELL SECTION
- RESERVOIR LAYER SELECTION
- COMPUTATION OF PETROPHYSICAL PARAMETERS

MAY BE APPLIED ON THE STAGE OF LOG DATA OPERATIVE INTERPRETATION, AND FOR AREA INTERPRETATION AND RESOURCE CALCULATION.

## Functional possibilities

- ✓ Presence of modules, allowing to realize main procedures, applied in LOG interpretation.
- ✓ Graphical interactive mode with data visualization in real time mode.
- ✓ Multi-window graphic system, where all the windows are logically connected.
- ✓ User program connection without developer interference.
- ✓ External setup files to provide user standards.
- ✓ Independence on sampling interval and information sizes.
- ✓ Independence on units.
- ✓ Pointwise and layer-by-layer processing with consideration of section parameters.

Operating systems: Red Hat Enterprise Linux, CentOS, Oracle Linux

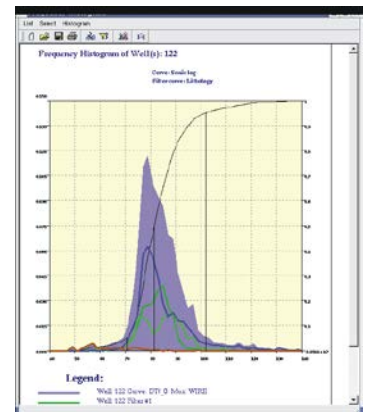
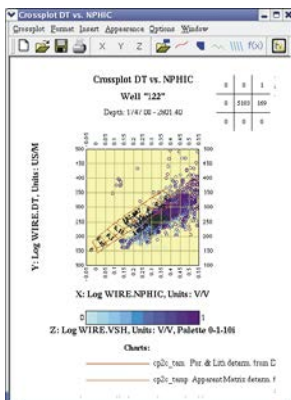


## Interpretation

- \* Well bore correction.
- \* Quality control of electrical logs.
- \* Definition of electrical resistivity in pointwise and layer-by-layer modes.
- \* Definition of porosity, shaliness, oil and gas saturation by standard algorithms.
- \* Calculator, implementing main petrophysical and mathematical dependences.
- \* Lithological section disjunction using critical values of parameters.
- \* Calculation of reservoir parameter average values for further usage in model creation and resource calculation.

## Utilities

- ✓ Value display and correction graphically and in a table form.
- ✓ Curve filtering.
- ✓ Depth matching.
- ✓ Curve conversion - compression, expansion, sampling interval modification.
- ✓ Curve copy from one set into another.
- ✓ Transformation of a continuous curve into interval and backwards.
- ✓ Histogram and cross-plot creation.
- ✓ Information input from LAS LIS ASCII format files.
- ✓ Information output in LAS format.
- ✓ Printing and plotting.



[www.geoleader.ru](http://www.geoleader.ru)



**GEOLEADER**  
group of companies

Geoleader Ltd.  
Russia, 117 292, Moscow,  
Office 259, 16/2 Dm. Ulyanova str.  
Tel.: +7 (495) 982 36 31  
e-mail: info@geoleader.ru

Geoleader Ltd. (affiliate)  
Russia, 625051, Tyumen  
43 a, Permyakova str.,  
Tel.: +7 (3452) 31 56 07  
e-mail: info@geoleader.ru